

THORN

Equaline

Simple pure design







Bring formal purity and efficient lighting performance into your interiors with the Thorn Equaline range

Its seamless rectangular shape provides a functional profile without dominating the architecture. The use of aluminium brings simplicity and a modern look to any space.

The product may be recessed, suspended or surface mounted and offers individual installation, continuous lines and system configurations for versatility of scheme design.

A choice of optics, including microprism technology, guarantees low glare but effective illumination of task areas and suspended versions are also available with an direct/indirect lighting.

- There is flexibility with the optics, either an opal or microprism diffuser or Satinbrite louvre
- Superior performance demonstrated by LORs up to 83% for Satinbrite versions
- Available in a range of lengths: individual (single and double modules); system (double and triple modules)
- Single T16 (T5) lamps in 28W, 35W, 49W and 54W ratings
- Control is through 'intelligent SensaDigital' or HFD high frequency digital dimmable electronic gear
- Integral LED emergency lighting options for open areas
- Minimalist design with screw free end caps
- Wide range of accessories such as spotlight module, ceiling rose kit & infill panels



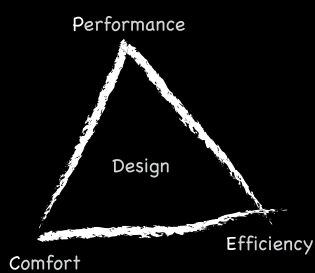
LED emergency module



Mini sensa

Performance, Efficiency and Comfort (PEC) – for a better lit environment

Equaline evokes the spirit of Thorn Lighting's dynamic, results-orientated PEC programme



The programme is based on the principle that Performance, Efficiency and Comfort determine the effectiveness of lighting, its impact on the people using it, and its impact on the natural environment. Equaline delivers the right light on the right place at the right time.

Performance: Providing the best visual effectiveness

- A choice of optics, from louvres to MPT (microprism technology) diffusers, plus numerous mounting options (surface, suspended and recessed) gives the right environment with good task visibility and glare control
- Direct/indirect suspended versions for balanced lighting and pleasantly bright ceilings, avoiding sharp, distracting lighting contrasts
- T16 lamps with good colour rendition, in excess of Ra 80
- System concept with infill modules and track spotlights focuses light onto the visual task areas

Efficiency: Conserving energy and effort, reducing CO₂ emissions and waste, providing lighting that is practical and efficient to install, operate and maintain.

- Efficient with high Light Output Ratios (LORs) up to 83%
- Minimisation of energy consumption by the use of high efficacy T16 lamps, circuits and luminaire optics
- Managed operation via dimmable gear or integral SensaDigital controls for presence and daylight link sensing
- Practical lighting arrangements to fit exacting spaces or form striking features

Comfort: giving people satisfaction and stimulation

- Minimalist design for easy integration into surroundings
- Provides optimal lighting conditions throughout a building or project for user satisfaction
- High frequency technology combined with lighting control allows lighting to be adjusted to suit the space and user



Applications

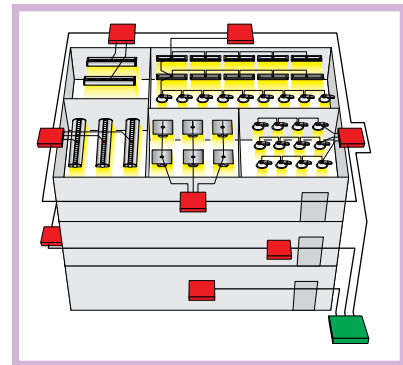
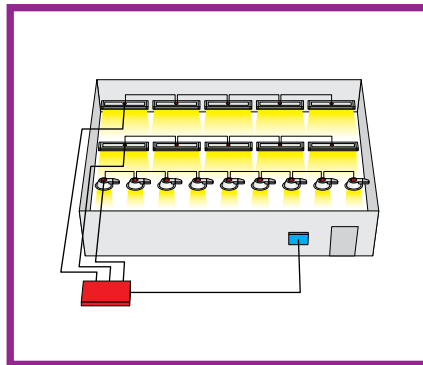
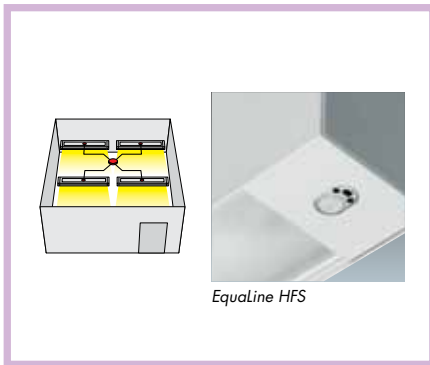


Lighting Controls

By conserving energy we give better value for money whilst saving global resources

Lighting can be responsible for up to 20% of total electricity consumption and in office buildings it can account for as much as 50% of energy costs.

Even the simplest lighting control equipment can help to minimise wasteful use of light and make the maximum use of natural light in line with the latest European recommendations and standards.



SensaLite features Thorn luminaires with built-in sensors and remote sensors, offering standard presence detection, daylight-linking and infra-red control.

Sensalite is the first step to comfort and energy saving, and is used for small office application, simple classrooms, corridors etc.

- SwitchLite consists of switching presence detectors and photo cells, working with the **HF versions of EqualLine**.
- RotaryDIM offers precise manual control via a wall plate and allows dimming and brightening the **HFD versions of EqualLine** manually.
- SensaDigital covers both features: Daylight-linked dimming, presence detection and manual override via an infra-red handheld controller. The **EqualLine HFS versions** have this intelligence built in.

SensaModular is a portfolio of lighting control products designed for single room applications. The 'modular' concept allows customers to build-up a set of components tailored specifically to their needs:

- Users can select modules for creating lighting scenes, enabling daylight-linking, integrating presence detection, switching, scene setting and infra-red control
- Just the components needed are taken and connected to, up to three groups of dimmable luminaires via a controller e.g. groups of **EqualLine HFD**

SensaAdvanced is a lighting management system for larger projects and those requiring greater levels of comfort:

- For all types of dimmable or switchable ballasts or lamps, including the **HFD versions of EqualLine**
- Daylight and Presence link
- Integration of blinds, screens and room partitions
- Different user interfaces like touch panels, wall units or PC
- Scene setting
- Time and Dynamic management
- A/V interface

Emergency E3TX LED Lighting

- Designed for anti-panic areas
- Easy electrical connection to EqualLine luminaires
- Discreet and unobtrusive
- Latest technology, future proof solution
- Safe, more reliable operation – long life, no need for lamp replacement



Minimum Illuminance (lux)	Mounting height (m)	Maximum spacing (m)				Diversity
		Centre to End ¹		Between Centres ²		
		Transverse	Axial	Transverse	Axial	
0.5	2.5	1.95	1.95	6.65	6.65	0.211
	3.0	1.95	1.95	7.05	7.05	0.296
	4.0	1.70	1.70	7.50	7.50	0.489
	5.0	1.00	1.00	7.75	7.75	0.711

¹ Distance between module and wall

² Distance between two modules

Equaline System

- The Equaline system allows you to create effective illumination without dominating the architecture
- System versions can be configured into 90° L, T and X shapes
- Optional dummy infills can be used to fit exacting spaces or to create striking features
- Spotlight modules can be incorporated to provide accent lighting
- LED Emergency module gives excellent performance and spacing, and can be integrated when required
- Available in Recessed, Surface or Suspended including Direct/Indirect
- Available in double and triple length modules
- All optics in the range can be incorporated into the system profile
- Profiles can easily be joined together via 3 connectors
- Electrical connection via simple feed-in module



90° L connector



Spotlight module

Product features - Individual and System

Lamps

⇒ 28- 54W T16 (FDH) Linear fluorescent. Cap: G5

Materials/Finish

Body: extruded anodised aluminium, recessed version is powder coated white
End Caps: die-cast aluminium, powder coated grey
Louvre: aluminium, Satinbrite finish
MPT: acrylic refractor and controller, polycarbonate clear cover
Diffuser: opal polycarbonate
Wiring: Low Smoke Zero Halogen

Installation/Mounting

For surface version individual luminaires are supplied with dedicated surface mounting brackets, for suspended and direct/indirect versions individual luminaires are supplied with adjustable wire suspension mounting, with quick-locks included, for System versions maximum spacing recommended 2.5m. Individual luminaires supplied with a 2.5m halogen free grey cable 3 x 0.75mm² and Dimming/Sensa versions 5 x 0.75mm²

Recessed version is suitable for recessed mounting into concrete ceilings and plasterboard ceiling using dedicated brackets, to be ordered separately. The luminaire body must be cast into the concrete during construction using the dedicated concrete brackets.

Standards

Designed and manufactured to comply with EN60598

⊕ Class I Electrical

⚠ IP20

CE





D/I version with diffuser



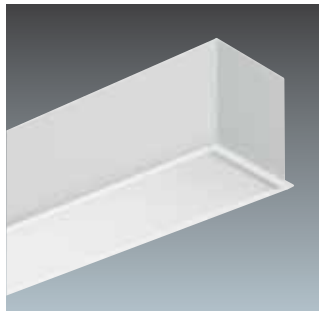
D/I version with Satinbrite louvre



Suspended version with Satinbrite louvre



Surface version with MPT



Recessed version with diffuser



Recessed version with Satinbrite louvre

Specification

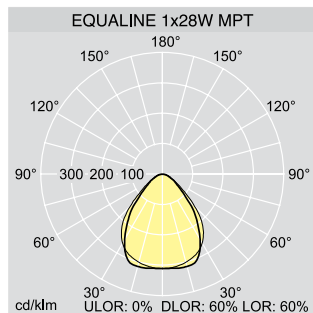
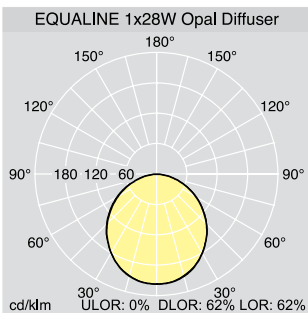
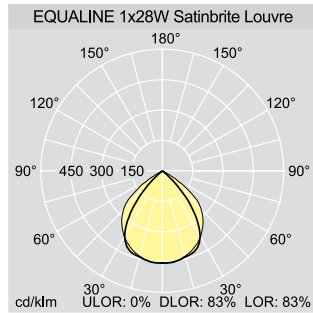
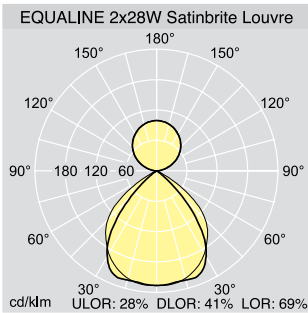
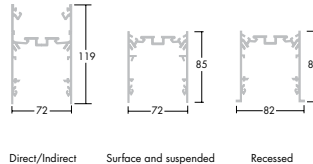
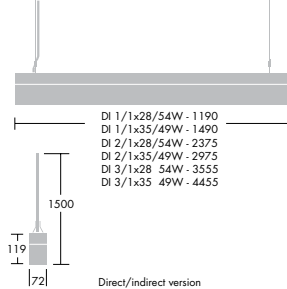
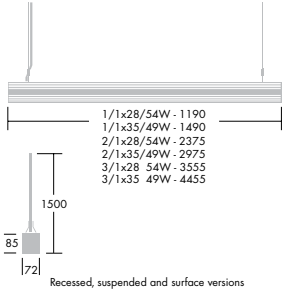
To specify state:

Surface mounted slim aluminium luminaire for use with T16 (T5) 28, 35, 49, 54W lamps, mounted via dedicated surface brackets. With Satinbrite Louvre/Opal diffuser and MicroPrism Technology optics. Mounted individually or in continuous lines, with dimmable and Sensa versions. As Thorn EqualLine (Surface).

Wire suspended slim aluminium luminaire for use with T16 (T5) 28, 35, 49, 54W lamps, mounted via dedicated wire suspension brackets. With Satinbrite Louvre/Opal diffuser and MicroPrism Technology optics. Mounted individually or in continuous lines, with dimmable and Sensa versions. As Thorn EqualLine (Suspended).

Recessed slim aluminium luminaire with for use with T16 (T5) 28, 35, 49, 54W lamps, mounted via dedicated concrete/plasterboard brackets. With Satinbrite Louvre/Opal diffuser and MicroPrism Technology optics. Mounted individually or in continuous lines, with dimmable and Sensa versions. As Thorn EqualLine (Recessed).

Wire suspended slim aluminium luminaire for use with T16 (T5) 28, 35, 49, 54W lamps, mounted via dedicated wire suspension brackets. With Satinbrite Louvre/Opal diffuser and MicroPrism Technology optics. Mounted individually or in continuous lines, with dimmable and Sensa versions. As Thorn EqualLine (Direct/Indirect).



Ordering Guides Lamp(s) to be ordered separately

Individual single/double length

Description	Ilcos Code	Socket	Wt (kg)	SAP Code		
				Suspended (MSWT)	Surface (MCE)	Recessed (MRE)
Single length						
High Frequency						
EQUALINE 1X28W HF DSB	FDH	G5	3.0	96236846	96238133	96238170
EQUALINE 1X35W HF DSB	FDH	G5	3.75	96236847	96238134	96238171
EQUALINE 1X49W HF DSB	FDH	G5	3.75	96236848	96238135	96238172
EQUALINE 1X54W HF DSB	FDH	G5	3.0	96236881	96238136	96238173
EQUALINE 1X28W HF MPT	FDH	G5	3.0	96236869	96237042	96238178
EQUALINE 1X35W HF MPT	FDH	G5	3.75	96236870	96237043	96238179
EQUALINE 1X49W HF MPT	FDH	G5	3.75	96236871	96237044	96238180
EQUALINE 1X54W HF MPT	FDH	G5	3.0	96236872	96237072	96238181
EQUALINE 1X28W HF OP PC	FDH	G5	3.0	96236857	96238137	96238174
EQUALINE 1X35W HF OP PC	FDH	G5	3.75	96236858	96238138	96238175
EQUALINE 1X49W HF OP PC	FDH	G5	3.75	96236859	96238139	96238176
EQUALINE 1X54W HF OP PC	FDH	G5	3.0	96236860	96238140	96238177
High Frequency Digital Dimming						
EQUALINE 1X28W HFD DSB	FDH	G5	3.0	96236853	96237061	96238182
EQUALINE 1X35W HFD DSB	FDH	G5	3.75	96236854	96237062	96238183
EQUALINE 1X49W HFD DSB	FDH	G5	3.75	96236855	96238141	96238184
EQUALINE 1X54W HFD DSB	FDH	G5	3.0	96236856	96237063	96238185
EQUALINE 1X28W HFD MPT	FDH	G5	3.0	96238105	96237049	96238190
EQUALINE 1X35W HFD MPT	FDH	G5	3.75	96238106	96237050	96238191
EQUALINE 1X49W HFD MPT	FDH	G5	3.75	96238107	96237051	96238192
EQUALINE 1X54W HFD MPT	FDH	G5	3.0	96238108	96237052	96238193
EQUALINE 1X28W HFD OP PC	FDH	G5	3.0	96236865	96238142	96238186
EQUALINE 1X35W HFD OP PC	FDH	G5	3.75	96236866	96238143	96238187
EQUALINE 1X49W HFD OP PC	FDH	G5	3.75	96236867	96238144	96238188
EQUALINE 1X54W HFD OP PC	FDH	G5	3.0	96236868	96238145	96238189
Sensa						
EQUALINE 1X28W HFS DSB	FDH	G5	3.2	96238109	96238146	96238194
EQUALINE 1X35W HFS DSB	FDH	G5	3.95	96238110	96238147	96238195
EQUALINE 1X49W HFS DSB	FDH	G5	3.95	96238111	96238148	96238196
EQUALINE 1X54W HFS DSB	FDH	G5	3.2	96238112	96238149	96238197
EQUALINE 1X28W HFS MPT	FDH	G5	3.2	96238117	96238154	96238202
EQUALINE 1X35W HFS MPT	FDH	G5	3.95	96238118	96238155	96238203
EQUALINE 1X49W HFS MPT	FDH	G5	3.95	96238119	96238156	96238204
EQUALINE 1X54W HFS MPT	FDH	G5	3.2	96238120	96238157	96238205
EQUALINE 1X28W HFS OP PC	FDH	G5	3.2	96238113	96238150	96238198
EQUALINE 1X35W HFS OP PC	FDH	G5	3.95	96238114	96238151	96238199
EQUALINE 1X49W HFS OP PC	FDH	G5	3.95	96238115	96238152	96238200
EQUALINE 1X54W HFS OP PC	FDH	G5	3.2	96238116	96238153	96238201
Double length						
High Frequency						
EQUALINE 2/1X28W HF DSB	FDH	G5	5.6	96236849	96237057	96238206
EQUALINE 2/1X35W HF DSB	FDH	G5	7.0	96236850	96237058	96238207
EQUALINE 2/1X49W HF DSB	FDH	G5	7.0	96236851	96237059	96238208
EQUALINE 2/1X54W HF DSB	FDH	G5	5.6	96236852	96237060	96238209
EQUALINE 2/1X28W HF MPT	FDH	G5	5.6	96236873	96237045	96238214
EQUALINE 2/1X35W HF MPT	FDH	G5	7.0	96236874	96237046	96238215
EQUALINE 2/1X49W HF MPT	FDH	G5	7.0	96236875	96237047	96238216
EQUALINE 2/1X54W HF MPT	FDH	G5	5.6	96236876	96237048	96238217
EQUALINE 2/1X28W HF OP PC	FDH	G5	5.6	96236861	96237064	96238210
EQUALINE 2/1X35W HF OP PC	FDH	G5	7.0	96236862	96237065	96238211
EQUALINE 2/1X49W HF OP PC	FDH	G5	7.0	96236863	96237066	96238212
EQUALINE 2/1X54W HF OP PC	FDH	G5	5.6	96236864	96237067	96238213
High Frequency Digital Dimming						
EQUALINE 2/1X28W HFD DSB	FDH	G5	5.6	96256206	96236877	96238218
EQUALINE 2/1X35W HFD DSB	FDH	G5	7.0	96256207	96236878	96238219
EQUALINE 2/1X49W HFD DSB	FDH	G5	7.0	96256208	96236879	96238220
EQUALINE 2/1X54W HFD DSB	FDH	G5	5.6	96256209	96236880	96238221
EQUALINE 2/1X28W HFD MPT	FDH	G5	5.6	96256214	96237053	96238226
EQUALINE 2/1X35W HFD MPT	FDH	G5	7.0	96256215	96237054	96238227
EQUALINE 2/1X49W HFD MPT	FDH	G5	7.0	96256216	96237055	96238228
EQUALINE 2/1X54W HFD MPT	FDH	G5	5.6	96256217	96237056	96238229
EQUALINE 2/1X28W HFD OP PC	FDH	G5	5.6	96256210	96237068	96238222
EQUALINE 2/1X35W HFD OP PC	FDH	G5	7.0	96256211	96237069	96238223
EQUALINE 2/1X49W HFD OP PC	FDH	G5	7.0	96256212	96237070	96238224
EQUALINE 2/1X54W HFD OP PC	FDH	G5	5.6	96256213	96237071	96238225
Sensa						
EQUALINE 2/1X28W HFS DSB	FDH	G5	5.8	96238121	96238158	96238230
EQUALINE 2/1X35W HFS DSB	FDH	G5	7.2	96238122	96238159	96238231
EQUALINE 2/1X49W HFS DSB	FDH	G5	7.2	96238123	96238160	96238232
EQUALINE 2/1X54W HFS DSB	FDH	G5	5.8	96238124	96238161	96238233
EQUALINE 2/1X28W HFS MPT	FDH	G5	5.8	96238129	96238166	96238238
EQUALINE 2/1X35W HFS MPT	FDH	G5	7.2	96238130	96238167	96238239
EQUALINE 2/1X49W HFS MPT	FDH	G5	7.2	96238131	96238168	96238240
EQUALINE 2/1X54W HFS MPT	FDH	G5	5.8	96238132	96238169	96238241
EQUALINE 2/1X28W HFS OP PC	FDH	G5	5.8	96238125	96238162	96238234
EQUALINE 2/1X35W HFS OP PC	FDH	G5	7.2	96238126	96238163	96238235
EQUALINE 2/1X49W HFS OP PC	FDH	G5	7.2	96238127	96238164	96238236
EQUALINE 2/1X54W HFS OP PC	FDH	G5	5.8	96238128	96238165	96238237

Individual D/I single/double length

Description	Ilcos Code	Socket	Wt (kg)	SAP Code	
				Surface (MCE)	Recessed (MRE)
Single Length					
High Frequency					
EQUALINE DI 2X28W HF DSB	FDH	G5	4.0	96238242	
EQUALINE DI 2X35W HF DSB	FDH	G5	5.0	96238243	
EQUALINE DI 2X49W HF DSB	FDH	G5	5.0	96238244	
EQUALINE DI 2X54W HF DSB	FDH	G5	4.0	96238245	
EQUALINE DI 2X28W HF MPT	FDH	G5	4.0	96238250	
EQUALINE DI 2X35W HF MPT	FDH	G5	5.0	96238251	
EQUALINE DI 2X49W HF MPT	FDH	G5	5.0	96238252	
EQUALINE DI 2X54W HF MPT	FDH	G5	4.0	96238253	
EQUALINE DI 2X28W HF OP PC	FDH	G5	4.0	96238246	
EQUALINE DI 2X35W HF OP PC	FDH	G5	5.0	96238247	
EQUALINE DI 2X49W HF OP PC	FDH	G5	5.0	96238248	
EQUALINE DI 2X54W HF OP PC	FDH	G5	4.0	96238249	
High Frequency Digital Dimming					
EQUALINE DI 2X28W HFD DSB	FDH	G5	4.0	96238254	
EQUALINE DI 2X35W HFD DSB	FDH	G5	5.0	96238255	
EQUALINE DI 2X49W HFD DSB	FDH	G5	5.0	96238256	
EQUALINE DI 2X54W HFD DSB	FDH	G5	4.0	96238257	
EQUALINE DI 2X28W HFD MPT	FDH	G5	4.0	96238262	
EQUALINE DI 2X35W HFD MPT	FDH	G5	5.0	96238263	
EQUALINE DI 2X49W HFD MPT	FDH	G5	5.0	96238264	
EQUALINE DI 2X54W HFD MPT	FDH	G5	4.0	96238265	
EQUALINE DI 2X28W HFD OP PC	FDH	G5	4.0	96238258	
EQUALINE DI 2X35W HFD OP PC	FDH	G5	5.0	96238259	
EQUALINE DI 2X49W HFD OP PC	FDH	G5	5.0	96238260	
EQUALINE DI 2X54W HFD OP PC	FDH	G5	4.0	96238261	
Sensa					
EQUALINE DI 2X28W HFS DSB	FDH	G5	4.2	96238266	
EQUALINE DI 2X35W HFS DSB	FDH	G5	5.2	96238267	
EQUALINE DI 2X49W HFS DSB	FDH	G5	5.2	96238268	
EQUALINE DI 2X54W HFS DSB	FDH	G5	4.2	96238269	
EQUALINE DI 2X28W HFS MPT	FDH	G5	4.2	96238274	
EQUALINE DI 2X35W HFS MPT	FDH	G5	5.2	96238275	
EQUALINE DI 2X49W HFS MPT	FDH	G5	5.2	96238276	
EQUALINE DI 2X54W HFS MPT	FDH	G5	4.2	96238277	
EQUALINE DI 2X28W HFS OP PC	FDH	G5	4.2	96238270	
EQUALINE DI 2X35W HFS OP PC	FDH	G5	5.2	96238271	
EQUALINE DI 2X49W HFS OP PC	FDH	G5	5.2	96238272	
EQUALINE DI 2X54W HFS OP PC	FDH	G5	4.2	96238273	
Double length					
High Frequency					
EQUALINE DI 2/2X28W HF DSB	FDH	G5	7.7	96238278	
EQUALINE DI 2/2X35W HF DSB	FDH	G5	9.6	96238279	
EQUALINE DI 2/2X49W HF DSB	FDH	G5	9.6	96238280	
EQUALINE DI 2/2X54W HF DSB	FDH	G5	7.7	96238281	
EQUALINE DI 2/2X28W HF MPT	FDH	G5	7.7	96238286	
EQUALINE DI 2/2X35W HF MPT	FDH	G5	9.6	96238287	
EQUALINE DI 2/2X49W HF MPT	FDH	G5	9.6	96238288	
EQUALINE DI 2/2X54W HF MPT	FDH	G5	7.7	96238289	
EQUALINE DI 2/2X28W HF OP PC	FDH	G5	7.7	96238282	
EQUALINE DI 2/2X35W HF OP PC	FDH	G5	9.6	96238283	
EQUALINE DI 2/2X49W HF OP PC	FDH	G5	9.6	96238284	
EQUALINE DI 2/2X54W HF OP PC	FDH	G5	7.7	96238285	
High Frequency Digital Dimming					
EQUALINE DI 2/2X28W HFD DSB	FDH	G5	7.7	96238290	
EQUALINE DI 2/2X35W HFD DSB	FDH	G5	9.6	96238291	
EQUALINE DI 2/2X49W HFD DSB	FDH	G5	9.6	96238292	
EQUALINE DI 2/2X54W HFD DSB	FDH	G5	7.7	96238293	
EQUALINE DI 2/2X28W HFD MPT	FDH	G5	7.7	96238298	
EQUALINE DI 2/2X35W HFD MPT	FDH	G5	9.6	96238299	
EQUALINE DI 2/2X49W HFD MPT	FDH	G5	9.6	96238300	
EQUALINE DI 2/2X54W HFD MPT	FDH	G5	7.7	96238301	
EQUALINE DI 2/2X28W HFD OP PC	FDH	G5	7.7	96238294	
EQUALINE DI 2/2X35W HFD OP PC	FDH	G5	9.6	96238295	
EQUALINE DI 2/2X49W HFD OP PC	FDH	G5	9.6	96238296	
EQUALINE DI 2/2X54W HFD OP PC	FDH	G5	7.7	96238297	
Sensa					
EQUALINE DI 2/2X28W HFS DSB	FDH	G5	7.9	96238302	
EQUALINE DI 2/2X35W HFS DSB	FDH	G5	9.8	96238303	
EQUALINE DI 2/2X49W HFS DSB	FDH	G5	9.8	96238304	
EQUALINE DI 2/2X54W HFS DSB	FDH	G5	7.9	96238305	
EQUALINE DI 2/2X28W HFS MPT	FDH	G5	7.9	96238310	
EQUALINE DI 2/2X35W HFS MPT	FDH	G5	9.8	96238311	
EQUALINE DI 2/2X49W HFS MPT	FDH	G5	9.8	96238312	
EQUALINE DI 2/2X54W HFS MPT	FDH	G5	7.9	96238313	
EQUALINE DI 2/2X28W HFS OP PC	FDH	G5	7.9	96238306	
EQUALINE DI 2/2X35W HFS OP PC	FDH	G5	9.8	96238307	
EQUALINE DI 2/2X49W HFS OP PC	FDH	G5	9.8	96238308	
EQUALINE DI 2/2X54W HFS OP PC					

System double/triple length

Description	Icos Code	Socket	Wt (kg)	SAP Code		
				Suspended (MSWT)	Surface (MCE)	Recessed (MRE)
System, double length						
High Frequency						
EQUALINE S 2/1X28W HF DSB	FDH	G5	5.85	96238314	96238386	96238671
EQUALINE S 2/1X35W HF DSB	FDH	G5	7.25	96238315	96238387	96238672
EQUALINE S 2/1X49W HF DSB	FDH	G5	7.25	96238316	96238388	96238673
EQUALINE S 2/1X54W HF DSB	FDH	G5	5.85	96238317	96238389	96238674
EQUALINE S 2/1X28W HF MPT	FDH	G5	5.85	96238322	96238394	96238679
EQUALINE S 2/1X35W HF MPT	FDH	G5	7.25	96238323	96238395	96238680
EQUALINE S 2/1X49W HF MPT	FDH	G5	7.25	96238324	96238396	96238681
EQUALINE S 2/1X54W HF MPT	FDH	G5	5.85	96238325	96238397	96238682
EQUALINE S 2/1X28W HF OP PC	FDH	G5	5.85	96238318	96238390	96238675
EQUALINE S 2/1X35W HF OP PC	FDH	G5	7.25	96238319	96238391	96238676
EQUALINE S 2/1X49W HF OP PC	FDH	G5	7.25	96238320	96238392	96238677
EQUALINE S 2/1X54W HF OP PC	FDH	G5	5.85	96238321	96238393	96238678

High Frequency Digital Dimming						
EQUALINE S 2/1X28W HFD DSB	FDH	G5	5.85	96238326	96238398	96238683
EQUALINE S 2/1X35W HFD DSB	FDH	G5	7.25	96238327	96238399	96238684
EQUALINE S 2/1X49W HFD DSB	FDH	G5	7.25	96238328	96238400	96238685
EQUALINE S 2/1X54W HFD DSB	FDH	G5	5.85	96238329	96238401	96238686
EQUALINE S 2/1X28W HFD MPT	FDH	G5	5.85	96238334	96238406	96238691
EQUALINE S 2/1X35W HFD MPT	FDH	G5	7.25	96238335	96238407	96238692
EQUALINE S 2/1X49W HFD MPT	FDH	G5	7.25	96238336	96238408	96238693
EQUALINE S 2/1X54W HFD MPT	FDH	G5	5.85	96238337	96238409	96238694
EQUALINE S 2/1X28W HFD OP PC	FDH	G5	5.85	96238330	96238402	96238687
EQUALINE S 2/1X35W HFD OP PC	FDH	G5	7.25	96238331	96238403	96238688
EQUALINE S 2/1X49W HFD OP PC	FDH	G5	7.25	96238332	96238404	96238689
EQUALINE S 2/1X54W HFD OP PC	FDH	G5	5.85	96238333	96238405	96238690

Sensa						
EQUALINE S 2/1X28W HFS DSB	FDH	G5	6.0	96238338	96238410	96238695
EQUALINE S 2/1X35W HFS DSB	FDH	G5	7.5	96238339	96238411	96238696
EQUALINE S 2/1X49W HFS DSB	FDH	G5	7.5	96238340	96238412	96238697
EQUALINE S 2/1X54W HFS DSB	FDH	G5	6.0	96238341	96238413	96238698
EQUALINE S 2/1X28W HFS MPT	FDH	G5	6.0	96238346	96238418	96238723
EQUALINE S 2/1X35W HFS MPT	FDH	G5	7.5	96238347	96238419	96238724
EQUALINE S 2/1X49W HFS MPT	FDH	G5	7.5	96238348	96238420	96238725
EQUALINE S 2/1X54W HFS MPT	FDH	G5	6.0	96238349	96238421	96238726
EQUALINE S 2/1X28W HFS OP PC	FDH	G5	6.0	96238342	96238414	96238699
EQUALINE S 2/1X35W HFS OP PC	FDH	G5	7.5	96238343	96238415	96238720
EQUALINE S 2/1X49W HFS OP PC	FDH	G5	7.5	96238344	96238416	96238721
EQUALINE S 2/1X54W HFS OP PC	FDH	G5	6.0	96238345	96238417	96238722

System, triple length						
High Frequency						
EQUALINE S 3/1X28W HF DSB	FDH	G5	8.3	96238350	96238422	96238727
EQUALINE S 3/1X35W HF DSB	FDH	G5	10.25	96238351	96238423	96238728
EQUALINE S 3/1X49W HF DSB	FDH	G5	10.25	96238352	96238424	96238729
EQUALINE S 3/1X54W HF DSB	FDH	G5	8.3	96238353	96238425	96238730
EQUALINE S 3/1X28W HF MPT	FDH	G5	8.3	96238358	96238643	96238735
EQUALINE S 3/1X35W HF MPT	FDH	G5	10.25	96238359	96238644	96238736
EQUALINE S 3/1X49W HF MPT	FDH	G5	10.25	96238360	96238645	96238737
EQUALINE S 3/1X54W HF MPT	FDH	G5	8.3	96238361	96238646	96238738
EQUALINE S 3/1X28W HF OP PC	FDH	G5	8.3	96238354	96238639	96238731
EQUALINE S 3/1X35W HF OP PC	FDH	G5	10.25	96238355	96238640	96238732
EQUALINE S 3/1X49W HF OP PC	FDH	G5	10.25	96238356	96238641	96238733
EQUALINE S 3/1X54W HF OP PC	FDH	G5	8.3	96238357	96238642	96238734

High Frequency Digital Dimming						
EQUALINE S 3/1X28W HFD DSB	FDH	G5	8.3	96238362	96238647	96238739
EQUALINE S 3/1X35W HFD DSB	FDH	G5	10.25	96238363	96238648	96238740
EQUALINE S 3/1X49W HFD DSB	FDH	G5	10.25	96238364	96238649	96238741
EQUALINE S 3/1X54W HFD DSB	FDH	G5	8.3	96238365	96238650	96238742
EQUALINE S 3/1X28W HFD MPT	FDH	G5	8.3	96238370	96238655	96238747
EQUALINE S 3/1X35W HFD MPT	FDH	G5	10.25	96238371	96238656	96238748
EQUALINE S 3/1X49W HFD MPT	FDH	G5	10.25	96238372	96238657	96238749
EQUALINE S 3/1X54W HFD MPT	FDH	G5	8.3	96238373	96238658	96238750
EQUALINE S 3/1X28W HFD OP PC	FDH	G5	8.3	96238366	96238651	96238743
EQUALINE S 3/1X35W HFD OP PC	FDH	G5	10.25	96238367	96238652	96238744
EQUALINE S 3/1X49W HFD OP PC	FDH	G5	10.25	96238368	96238653	96238745
EQUALINE S 3/1X54W HFD OP PC	FDH	G5	8.3	96238369	96238654	96238746

Sensa						
EQUALINE S 3/1X28W HFS DSB	FDH	G5	8.5	96238374	96238659	96238751
EQUALINE S 3/1X35W HFS DSB	FDH	G5	10.45	96238375	96238660	96238752
EQUALINE S 3/1X49W HFS DSB	FDH	G5	10.45	96238376	96238661	96238753
EQUALINE S 3/1X54W HFS DSB	FDH	G5	8.5	96238377	96238662	96238754
EQUALINE S 3/1X28W HFS MPT	FDH	G5	8.5	96238382	96238667	96238759
EQUALINE S 3/1X35W HFS MPT	FDH	G5	10.45	96238383	96238668	96238760
EQUALINE S 3/1X49W HFS MPT	FDH	G5	10.45	96238384	96238669	96238761
EQUALINE S 3/1X54W HFS MPT	FDH	G5	8.5	96238385	96238670	96238762
EQUALINE S 3/1X28W HFS OP PC	FDH	G5	8.5	96238378	96238663	96238755
EQUALINE S 3/1X35W HFS OP PC	FDH	G5	10.45	96238379	96238664	96238756
EQUALINE S 3/1X49W HFS OP PC	FDH	G5	10.45	96238380	96238665	96238757
EQUALINE S 3/1X54W HFS OP PC	FDH	G5	8.5	96238381	96238666	96238758

For Emergency LED Modules see page 13.

System D/I double/triple length

Description	Icos Code	Socket	Wt (kg)	SAP Code
System, double length				
High Frequency				
EQUALINE S DI 2/2X28W HF DSB	FDH	G5	7.5	96238784
EQUALINE S DI 2/2X35W HF DSB	FDH	G5	9.4	96238785
EQUALINE S DI 2/2X49W HF DSB	FDH	G5	9.4	96238786
EQUALINE S DI 2/2X54W HF DSB	FDH	G5	7.5	96238787
EQUALINE S DI 2/2X28W HF MPT	FDH	G5	7.5	96238792
EQUALINE S DI 2/2X35W HF MPT	FDH	G5	9.4	96238793
EQUALINE S DI 2/2X49W HF MPT	FDH	G5	9.4	96238794
EQUALINE S DI 2/2X54W HF MPT	FDH	G5	7.5	96238795
EQUALINE S DI 2/2X28W HF OP PC	FDH	G5	7.5	96238788
EQUALINE S DI 2/2X35W HF OP PC	FDH	G5	9.4	96238789
EQUALINE S DI 2/2X49W HF OP PC	FDH	G5	9.4	96238790
EQUALINE S DI 2/2X54W HF OP PC	FDH	G5	7.5	96238791

High Frequency Digital Dimming				
EQUALINE S DI 2/2X28W HFD DSB	FDH	G5	7.5	96238796
EQUALINE S DI 2/2X35W HFD DSB	FDH	G5	9.4	96238797
EQUALINE S DI 2/2X49W HFD DSB	FDH	G5	9.4	96238798
EQUALINE S DI 2/2X54W HFD DSB	FDH	G5	7.5	96238799
EQUALINE S DI 2/2X28W HFD MPT	FDH	G5	7.5	96238804
EQUALINE S DI 2/2X35W HFD MPT	FDH	G5	9.4	96238805
EQUALINE S DI 2/2X49W HFD MPT	FDH	G5	9.4	96238806
EQUALINE S DI 2/2X54W HFD MPT	FDH	G5	7.5	96238807
EQUALINE S DI 2/2X28W HFD OP PC	FDH	G5	7.5	96238800
EQUALINE S DI 2/2X35W HFD OP PC	FDH	G5	9.4	96238801
EQUALINE S DI 2/2X49W HFD OP PC	FDH	G5	9.4	96238802
EQUALINE S DI 2/2X54W HFD OP PC	FDH	G5	7.5	96238803

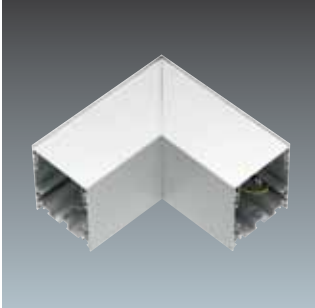
Sensa				
EQUALINE S DI 2/2X28W HFS DSB	FDH	G5	7.7	96238808
EQUALINE S DI 2/2X35W HFS DSB	FDH	G5	9.6	96238809
EQUALINE S DI 2/2X49W HFS DSB	FDH	G5	9.6	96238810
EQUALINE S DI 2/2X54W HFS DSB	FDH	G5	7.7	96238811
EQUALINE S DI 2/2X28W HFS MPT	FDH	G5	7.7	96238816
EQUALINE S DI 2/2X35W HFS MPT	FDH	G5	9.6	96238817
EQUALINE S DI 2/2X49W HFS MPT	FDH	G5	9.6	96238818
EQUALINE S DI 2/2X54W HFS MPT	FDH	G5	7.7	96238819
EQUALINE S DI 2/2X28W HFS OP PC	FDH	G5	7.7	96238812
EQUALINE S DI 2/2X35W HFS OP PC	FDH	G5	9.6	96238813
EQUALINE S DI 2/2X49W HFS OP PC	FDH	G5	9.6	96238814
EQUALINE S DI 2/2X54W HFS OP PC	FDH	G5	7.7	96238815

System, triple length				
High Frequency				
EQUALINE S DI 3/2X28W HF DSB	FDH	G5	11.5	96238820
EQUALINE S DI 3/2X35W HF DSB	FDH	G5	14.3	96238821
EQUALINE S DI 3/2X49W HF DSB	FDH	G5	14.3	96238822
EQUALINE S DI 3/2X54W HF DSB	FDH	G5	11.5	96238823
EQUALINE S DI 3/2X28W HF MPT	FDH	G5	11.5	96238828
EQUALINE S DI 3/2X35W HF MPT	FDH	G5	14.3	96238829
EQUALINE S DI 3/2X49W HF MPT	FDH	G5	14.3	96238830
EQUALINE S DI 3/2X54W HF MPT	FDH	G5	11.5	96238831
EQUALINE S DI 3/2X28W HF OP PC	FDH	G5	11.5	96238824
EQUALINE S DI 3/2X35W HF OP PC	FDH	G5	14.3	96238825
EQUALINE S DI 3/2X49W HF OP PC	FDH	G5	14.3	96238826
EQUALINE S DI 3/2X54W HF OP PC	FDH	G5	11.5	96238827

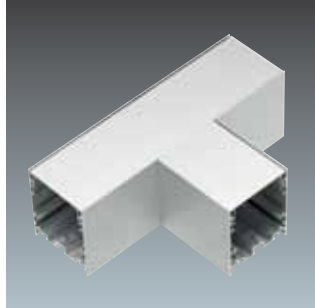
High Frequency Digital Dimming				
EQUALINE S DI 3/2X28W HFD DSB	FDH	G5	11.5	96238832
EQUALINE S DI 3/2X35W HFD DSB	FDH	G5	14.3	96238833
EQUALINE S DI 3/2X49W HFD DSB	FDH	G5	14.3	96238834
EQUALINE S DI 3/2X54W HFD DSB	FDH	G5	11.5	96238835
EQUALINE S DI 3/2X28W HFD MPT	FDH	G5	11.5	96238839
EQUALINE S DI 3/2X35W HFD MPT	FDH	G5	14.3	96238840
EQUALINE S DI 3/2X49W HFD MPT	FDH	G5	14.3	96238841
EQUALINE S DI 3/2X54W HFD MPT	FDH	G5	11.5	96238842
EQUALINE S DI 3/2X28W HFD OP PC	FDH	G5	11.5	96238902
EQUALINE S DI 3/2X35W HFD OP PC	FDH	G5	14.3	96238836
EQUALINE S DI 3/2X49W HFD OP PC	FDH	G5	14.3	96238837
EQUALINE S DI 3/2X54W HFD OP PC	FDH	G5	11.5	96238838

Sensa				
EQUALINE S DI 3/2X28W HFS DSB	FDH	G5	11.7	96238843
EQUALINE S DI 3/2X35W HFS DSB	FDH	G5	14.5	96238844
EQUALINE S DI 3/2X49W HFS DSB	FDH	G5	14.5	96238845
EQUALINE S DI 3/2X54W HFS DSB	FDH	G5	11.7	96238846</

Accessories



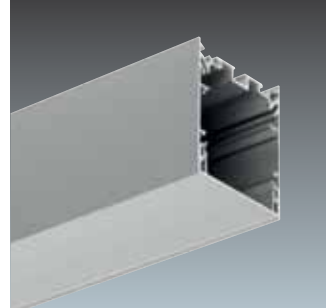
L connector



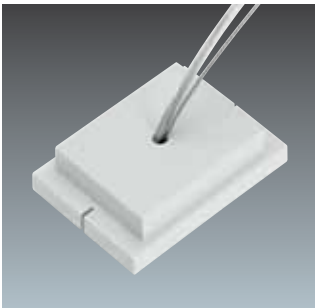
T connector



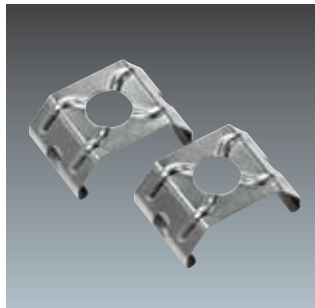
X connector



Infill



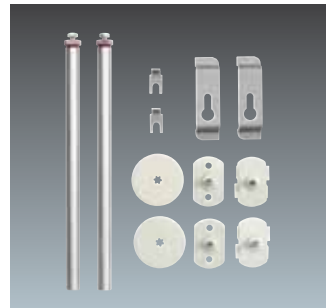
Ceiling rose kit



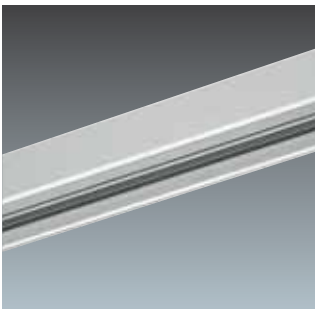
Surface mounting brackets



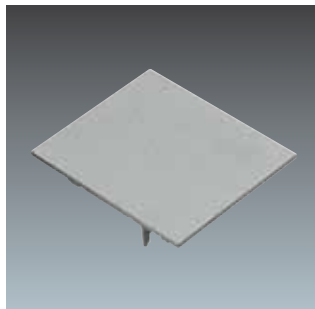
Wire suspension kit



Pendant kit



Spotlight module



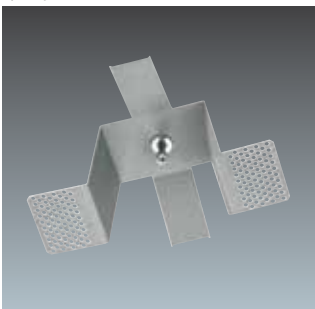
End cap kit



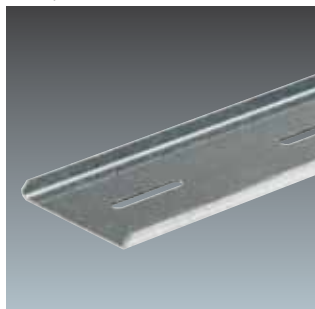
Transparent cable 3 core



Transparent cable 5 core



Plaster board fixing kit



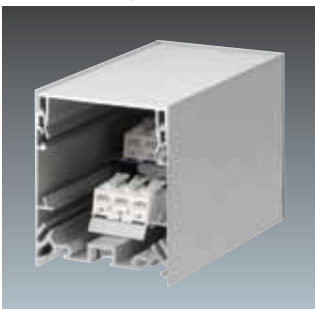
Concrete fixing kit



SensaDigital Controller



SensaDigital Programming Tool

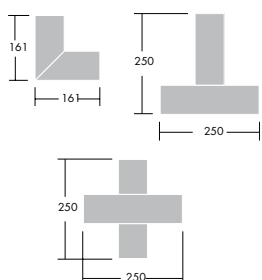


Mains Feed-in Block

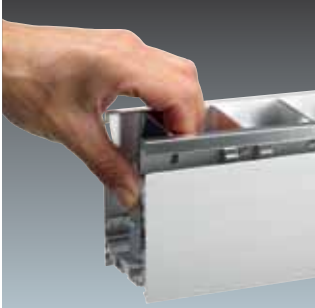
Accessories Ordering Guide

Description		Weight (kg)	SAP Code
End Cap Kits			
EQUALINE ECA SINGLE	SINGLE END CAP - SYSTEM LOUVRE VERSIONS	0.05	96238093
EQUALINE ECA BRA SINGLE	SINGLE END CAP - SYSTEM PLASTIC OPTIC VERSIONS	0.05	96238907
EQUALINE ECA MRE SINGLE	SINGLE END CAP - SYSTEM LOUVRE RECESSED VERSIONS	0.05	96238908
EQUALINE ECA BRA MRE SINGLE	SINGLE END CAP - SYSTEM PLASTIC OPTIC RECESSED VERSIONS	0.05	96238909
EQUALINE D/I ECA SINGLE	SINGLE END CAP - SYSTEM LOUVRE D/I VERSIONS	0.1	96238910
EQUALINE D/I ECA BRA SINGLE	SINGLE END CAP - SYSTEM PLASTIC OPTIC D/I VERSIONS	0.1	96238911
Mounting Kits			
EQUALINE MSWT 1500MM PAIR	SUSPENSION KIT FOR SYSTEM VERSIONS 1500MM	0.04	96237077
EQUALINE MCE PAIR	SURFACE MOUNTING BRACKET FOR SYSTEM VERSIONS	0.005	96238912
EQUALINE MRS KIT 200MM PAIR	PENDANT ROD SUSPENSION 200MM	0.22	96238913
EQUALINE PLASTERBOARD KIT PAIR	PLASTERBOARD MOUNTING KIT	0.35	96238914
EQUALINE CONCRETE KIT	CONCRETE MOUNTING KIT	0.4	96239131
CEILING ROSE KIT	CEILING ROSE WITH TRANSPARENT MAINS CABLE	0.15	96238915
System components			
EQUALINE CL	L CONNECTOR	0.52	96237012
EQUALINE CT	T CONNECTOR	0.7	96237013
EQUALINE CX	X CONNECTOR	0.95	96237014
EQUALINE CL MRE	L CONNECTOR FOR RECESSED	0.52	96238934
EQUALINE CL D/I	L CONNECTOR FOR D/I	0.64	96238935
EQUALINE INFILL PROFILE 1485MM	EMPTY INFILL PROFILE 1485MM FOR SYSTEM VERSIONS	2.50	96238916
EQUALINE INFILL PROFILE 1185MM	EMPTY INFILL PROFILE 1185MM FOR SYSTEM VERSIONS	2	96238917
EQUALINE SPOTLIGHT MODULE 1185MM	SPOTLIGHT MODULE 1185MM FOR SYSTEM VERSIONS	3.2	96238918
Electrical components			
EQUALINE FEED-IN BLOCK	MAIN FEED-IN FOR SYSTEM VERSIONS	0.33	96238092
EQUALINE D/I FEED-IN BLOCK	MAIN FEED-IN FOR DIRECT/INDIRECT SYSTEM VERSIONS	0.5	96239129
EQUALINE MRE FEED-IN BLOCK	MAIN FEED-IN FOR RECESSED SYSTEM VERSIONS	0.4	96239130
TRANSPARENT ML3c1.5	TRANSPARENT MAINS CABLE 3 CORE 1.5M	0.07	96238920
TRANSPARENT ML5c1.5	TRANSPARENT MAINS CABLE 5 CORE 1.5M	0.1	96238921
Sensa Accessories			
SENSA SENRC	SENSA HAND HELD CONTROLLER	0.11	96004175
SENSA SENP	SENSA PROGRAMMING TOOL	0.05	96004189

Description	Length (mm)	Weight (kg)	SAP Code
Emergency LED Modules			
EQUALINE E3TX LED Module ANTI PANIC OPEN AREA	250	0.9	96238873



Equaline System Installation



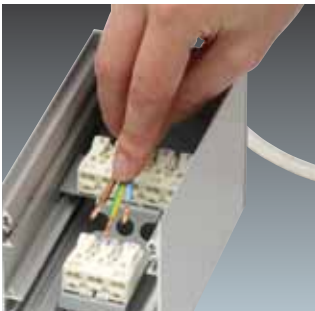
1.



2.



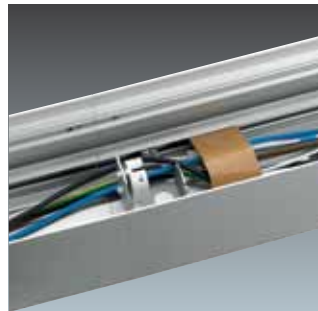
3.



4.



5.



6.



7.

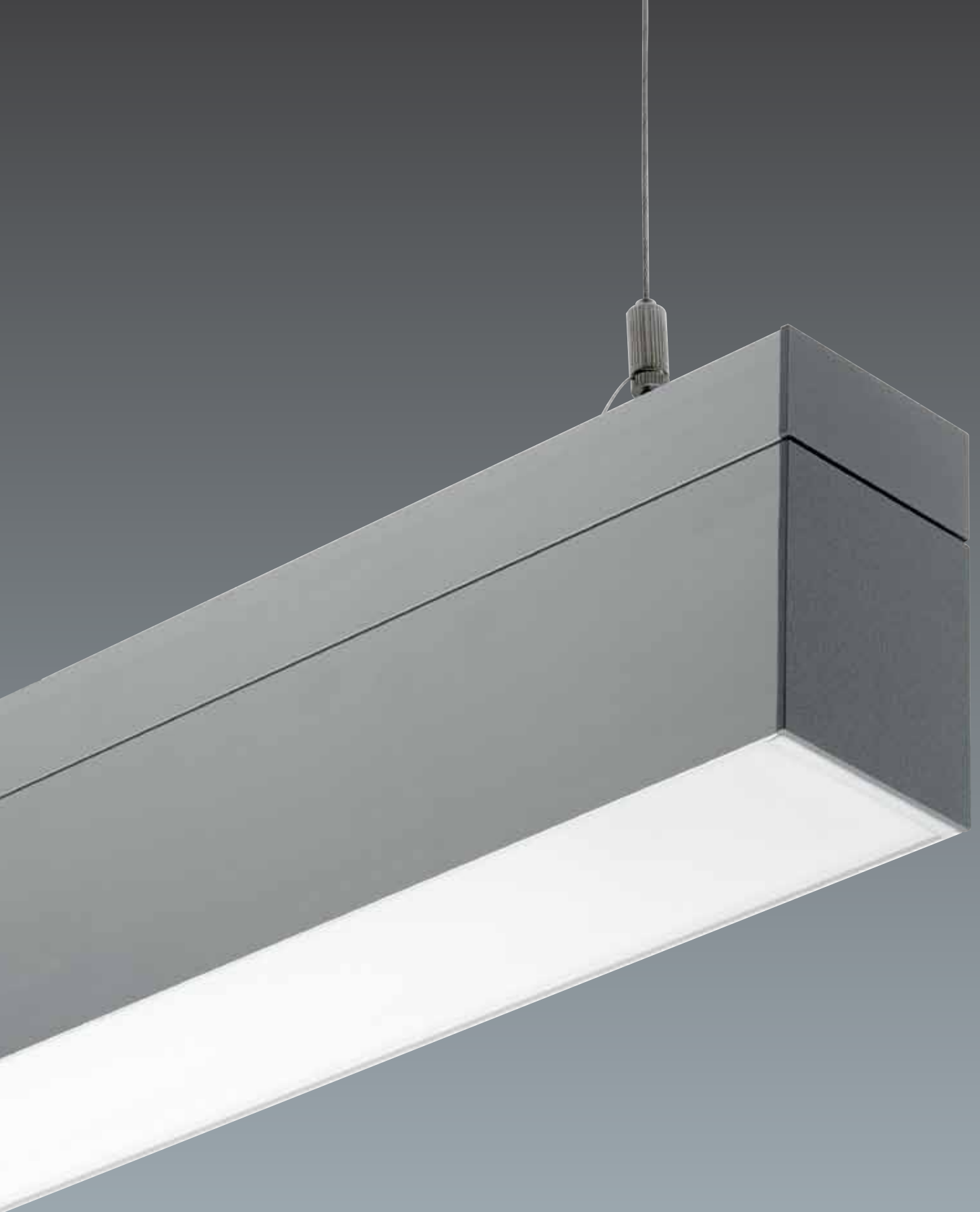


8.



9.

1. Remove the Optic from the fitting (Louvre, Opal Diffuser, MPT)
 2. Loosen the screws on each of the connector brackets, slide bracket along profile into position
 3. To connect Electrical Feed-in module slide the 3 brackets along the fitting profile and once on position tighten each screw
 4. Feed the mains cable through the hole in the Feed-in module and wire into the mains terminal block
 5. Push mains cables from the terminal block to the flying terminals inside the fitting
 6. To ensure wiring and terminals are kept away from the lamps place cable cover over terminals and click into the profile
- Depending on mounting type selected, connect mounting brackets to the fitting and mount to appropriate surface
7. To add additional fittings repeat step 2 and push cables into the flying terminals in the next fitting and repeat step 6
 8. Secure End Caps to fitting via 2 screws
 9. Replace Optic (Louvre, Opal Diffuser, MPT)
Connect electrically



THORN

Lighting people and places

Thorn Lighting Main Offices

Thorn Academy of Light

Green Lane Industrial Estate, Spennymoor
County Durham DL16 6HL, UK
Tel: (44) 1388 420 042
E-mail: academy@thornlighting.com
Website: www.thornacademyoflight.com

Australia

Thorn Lighting Pty Limited
43 Newton Road, Wetherill Park
NSW 2164
Tel: (02) 8786 6000
Fax: (02) 9612 2700
E-mail: infoaustralia@thornlighting.com
Website: www.thornlighting.com.au

Austria

Thorn Licht GmbH
Donau-City-Straße 1,
1220 Wien, Austria
Tel: (43) 1 202 66 11
Fax: (43) 1 202 66 11 82712
E-mail: office.at@thornlighting.com
Website: www.thornlighting.at

China

Thorn Lighting (Guangzhou) Operations Ltd,
No.12 Lian Yun Road, Eastern Section,
GETDD, Guangzhou 510530, China
Tel: (86) 20 3228 2706
Fax: (86) 20 3228 1777
E-mail: sales.cn@thornlighting.com

Thorn Lighting (Tianjin) Co. Ltd
332 Hongqi Road, Tianjin 300190,
China
Tel: (86) 22 8369 2303
Fax: (86) 22 8369 2302
E-mail: info.tj@thornlighting.com

Czech Republic

Thorn Lighting CS spol. s.r.o.,
Na Březince 6/930, 150 00 Praha 5
Czech Republic
Tel: (420) 224 315 252
Fax: (420) 233 326 313
E-mail: thorn.cz@thornlighting.com
Website: www.thornlighting.cz

Denmark

Thorn Lighting A/S
Kanonbådsvej 12B, Holmen,
1437 København K, Denmark
Tel: (45) 76 96 36 00
Fax: (45) 76 96 36 01
E-mail: info.dk@thornlighting.com
Website: www.thornlighting.dk

France

Thorn Europhane SA
156 Boulevard Haussmann,
Cedex 08, Paris 75379, France
Tel: (33) 1 49 53 6262
Fax: (33) 1 49 53 6240
Website: www.thornlighting.fr

Hong Kong

Thorn Lighting (Hong Kong) Limited
Unit 4301, Level 43, Tower 1,
Metropolaza, 223 Hing Fong Road,
Kwai Chung, N.T., Hong Kong
Tel: (852) 2578 4303
Fax: (852) 2887 0247
E-mail: info.hk@thornlighting.com

India

Thorn Lighting India Pvt. Ltd.
501, 5th Floor, Tanishka
Opp. Gundecha Industrial Estate
Akurli Road, Kandivali (E), Mumbai – 400 101, India
Tel: (91) 22-67839100
Fax: (91) 22-67839106
E-mail: international_sales@thornlighting.com
Website: www.thornlighting.com

International Sales

Thorn Lighting Limited
Silver Screens, Elstree Way, Borehamwood,
Hertfordshire, WD6 1FE, UK
Tel: (44) 20 8732 1915
Fax: (44) 20 8732 1911
E-mail: international_sales@thornlighting.com
Website: www.thornlighting.com

Ireland

Thorn Lighting (Ireland) Limited
Century House
Harolds Cross Road
Dublin 6W
Tel: (353) 1 4922 877
Fax: (353) 1 4922 724
E-mail: dublinsales@thornlighting.com
Website: www.thornlighting.co.uk

Italy

Thorn Europhane Spa
Via G Di Vittorio, 2, Cadriano di Granarolo,
Bologna 40057, Italy
Tel: (39) 051 763391
Fax: (39) 051 763088
E-mail: info@thornlighting.it
Website: www.thornlighting.it

New Zealand

Thorn Lighting (NZ) Ltd
399 Rosebank Road, Avondale, Auckland 1026
PO Box 71134, Rosebank, Auckland 1348
Tel: (64) 9 828 7155
Fax: (64) 9 828 7591
E-mail: info.NZ@thornlighting.com
Website: www.thornlighting.co.nz

Norway

Thorn Lighting AS
Strømsveien 344, 1081 Oslo,
Norway
Tel: (47) 22 82 07 00
Fax: (47) 22 82 07 01
E-mail: info.no@thornlighting.com
Website: www.thornlighting.no

Poland

Thorn Lighting Polska Sp.z.o.o.,
Ul. Gazowa 26A, Wrocław 50-513,
Poland
Tel: (48) 71 7833 740
Fax: (48) 71 3366 029
E-mail: thorn.pl@thornlighting.com
Website: www.thornlighting.pl

Russia

Thorn Lighting
Novoslobodskaya Str., 21, office 406
Business Center "Novoslobodskaya 21",
Moscow 127030, Russia
Tel: (7) 495 981 35 41
Fax: (7) 495 981 35 42
E-mail: kristina.skachinskaya@thornlighting.com
Website: www.thornlighting.ru

Singapore

Thorn Lighting (Singapore) Pte Ltd
5 Kaki Bukit Crescent, 04-02 Koyotech
Building, 416238 Singapore
Tel: (65) 6844 5800
Fax: (65) 6745 7707
E-mail: info.sg@thornlighting.com

Sweden

Thorn Lighting AB
Industrigatan, Box 305, SE-261 23
Landskrona, Sweden
Tel: (46) 418 520 00
Fax: (46) 418 265 74
E-mail: info.se@thornlighting.com
Website: www.thornlighting.se

United Arab Emirates

Thorn Lighting Ltd Dubai
Al Shoala Building, Office 301,
Block E, Airport road, P.O. Box 1200,
Deira, Dubai, UAE
Tel: (971) 4 2940181
Fax: (971) 4 2948838
E-mail: illuae@emirates.net.ae
Website: www.thornlighting.com

Thorn Gulf LLC

Al Shoala Building, Office 301/2, Block E,
Airport road, P.O. Box 22672, Deira,
Dubai, UAE
Tel: (971) 4 2948938
Fax: (971) 4 2948838
E-mail: thorn@gulf.ae
Website: www.thornlighting.com

United Kingdom

Thorn Lighting Limited
Silver Screens, Elstree Way, Borehamwood,
Hertfordshire, WD6 1FE, UK
Tel: (44) 20 8732 9800
Fax: (44) 20 8732 9801
E-mail: brochures.uk@thornlighting.com

Thorn Olympics Sports Lighting Team

Tel: 07785 251 438
E-mail: olympics.team@thornlighting.com
Website: www.thornlighting.co.uk

www.thornlighting.com

Thorn Lighting is constantly developing and improving its products. All descriptions, illustrations, drawings and specifications in this publication present only general particulars and shall not form part of any contract. The right is reserved to change specifications without prior notification or public announcement. All goods supplied by the company are supplied subject to the company's General Conditions of Sale, a copy of which is available on request. All measurements are in millimetres and weights in kilograms unless otherwise stated. Printed on Luxo Light.

Publication No: 468 (IS) Publication Date: 03/10



www.pefc.org