



Philips luminous textile with **kvadrat** soft cells

Reference guide

PHILIPS

I. Contents

1. Before first use.....	4
2. Introduction to luminous textile panels.....	6
2.1. Welcome to the world of luminous textiles	6
2.2. About this guide	6
2.3. Components.....	7
3. Installation	9
3.1. Install the Content Manager	9
3.2. Personalize your installation	10
4. Control your installations.....	12
4.1. Control page	12
4.2. Remote control.....	14
5. Warranty	15
5.1. Philips Large Luminous Surfaces January 2014.....	15
6. Contact.....	16
Appendix.....	17

I. Before first use

Read this reference guide carefully before you use the product and save it for future reference.

WARNING

- For indoor use only
- To avoid electrical shock keep fluids away from the product

PRECAUCIÓN

- De uso exclusivo en interior
- Evitar el contacto de líquidos con el producto por riesgo de descarga eléctrica

WARNUNG

- Nur in geschlossenen Räumen benutzen
- Um Stromschlag zu vermeiden, das Produkt nie mit Flüssigkeiten in Berührung bringen

ATTENTION

- Pour usage intérieur uniquement
- Pour éviter tout risque de choc électrique, ne pas mettre le produit au contact de liquides

ADVARSEL

- Kun til indendørs brug
- For at undgå elektrisk stød holde væsker væk fra produktet

USE WITH CARE

- Do not drop the product or allow objects to fall on top of the product
- Do not place heavy objects on top of the product
- Do not puncture, cut or press sharp objects into the product
- Do not expose the product to excessive heat produced by heating equipment or direct sunlight
- Do not place the luminous textile panel in direct sunlight for prolonged periods of time as this may cause discoloration of the fabrics
- Do not expose the product to fluids, as this may cause damage
- Do not expose any of the receptacles on the product to fluids, as this may cause damage to the product
- When unplugging cables from the product, always pull the plug, not the cable
- Do not connect any devices that are unapproved by Philips to the product, as this may void the warranty
- Only use the Content Manager software to manage (edit, upload, delete) files on the luminous textile panel

Waste disposal

This product is designed and manufactured with high quality materials and components, which can be recycled and reused. The product is compliant to the European Directive 2002/96/EC.

Modifications

You are not permitted to make any modifications to this product.

Operating conditions

Operating temperature: 5 - 35 °C (41 - 95 °F)

Relative humidity: max. 95% non-condensing

Storage conditions

Storage temperature: -20 - 70 °C (-4 - 158 °F)

Relative humidity: max. 95% non-condensing

Regulatory

The luminous textile panel is in conformity to the directives below:

Safety

Council directive 2006/95/EC, standards EN60598-1:2008 & EN60598-2-1:1989

Electro Magnetic Compatibility

Council Directive 2004/108/EC, standards EN55022:2006 + A1:2007, EN55024:1998 + A2:2003

2. Introduction to luminous textile panels

2.1. Welcome to the world of luminous textiles

The luminous textile panels are the latest innovation from Philips Lighting in the Large Luminous Surfaces segment. LTPs are capable of transforming any lobby, retail environment, hotel or open office space into a customer-oriented environment.

Key features of a luminous textile panel

- Unlimited design freedom
- Customizable visuals: adjustable dynamic lighting scenes
- A selection of several approved Kvadrat textiles
- A modular system that can be connected to the mains

About Content Manager

Download the latest Content Manager from our website: <http://www.largeluminoussurfaces.com/software>

The Content Manager is a software tool that enables the user to create a story on the luminous textile panels. The software manages the configuration, content editing, scheduling and conversion to compatible formats.

The user can import media, scale and map them onto the installation, combine them with a timeline and program a scheduler so presentation of the story begins at the predefined time.

Once the story is created, the software handles the conversion and uploads it to the luminous textile panels via Ethernet.

This enables the user to create any mood, story or amazing animation on the luminous textile panels without any creative limitations and without a steep learning curve thanks to the self-explanatory user interface.

2.2. About this guide

This guide contains the basic elements necessary to enable the user to control and use the basic functionality of the luminous textile panels for daily use. For more detailed information about installation and programming refer to the installation and cleaning guide which contains detailed information about installation and network configuration. For more detailed information about the Content Manager please refer to the help section of the Content Manager program. The following documents are also available online:

Document Name	Online Location	Within the packaging
Installation and cleaning guide	www.largeluminoussurfaces.com/pdfs	Printed booklet
Reference guide	www.largeluminoussurfaces.com/pdfs	Printed booklet
Content Manager manual	www.largeluminoussurfaces.com/pdfs	PDF in Content Manager help section

Table 1: Available documents.

2.3. Components

Name:	
1	Luminous textile panel (LTP) a. Wall mounted b. Ceiling mounted
2	Ethernet cable
3	Power cable (for each driver box) (Not available in US)
4	Optional loop-through power cable (Not available in US)
5	Optional remote control with USB receiver
6	User reference guide
7	Installation and cleaning guide
8	Mounting kit a. Portrait/landscape wall mounting kit b. Ceiling ounting kit c. Recessed mounting kit d. Pending ceiling mounting kit
9	Packaging
	Not included: Screws and plugs for fixation onto wall or ceiling Ethernet router depending on your region Tools

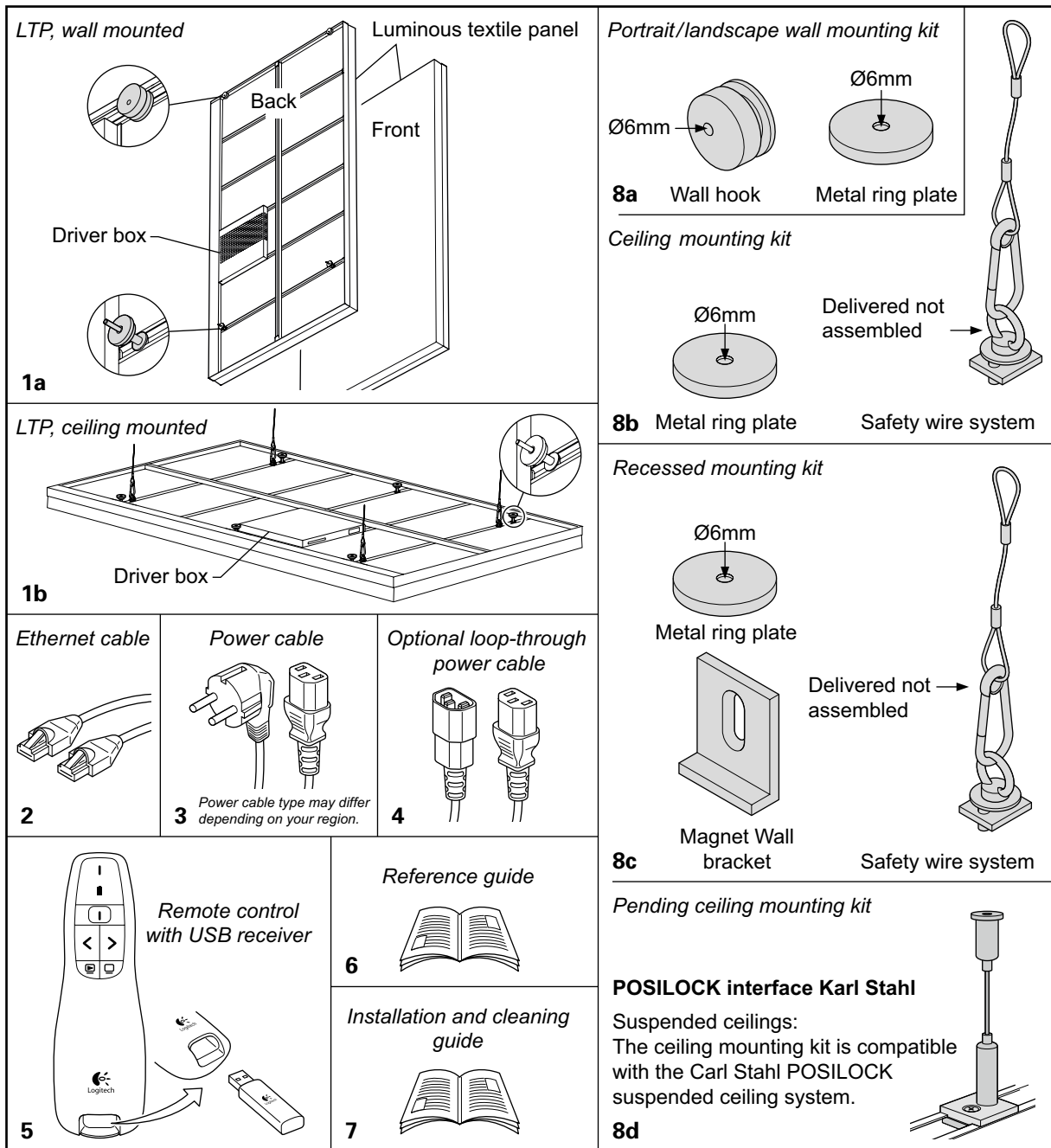


Figure 1: Components.

3. Installation

The installation and cleaning guide goes through all the necessary steps to install and finish the luminous textile panel installation.

Once the installation is complete, you can change the content playing on the installation by pressing Previous, Next, Play or Stop on the remote control. You can also access the installation via the control page of the Content Manager software to change the content and schedule.

If any of these features are not functional, contact your installer.

The following chapters explain how you can control, change and personalize your installation to take maximum advantage of all its features.

3.1. Install the Content Manager

The Content Manager allows you to change the content on your luminous textile panels, program the scheduler and change the settings on your panels. The Content Manager also allows you to change the configuration in which they are installed. Once installation is complete, the installer generates a Content Manager project containing all the configuration settings (*.lcp).

You can download Content Manager after registration on: <http://www.largeluminoussurfaces.com/software>

System requirements

Before you start installing the Content Manager, please make sure the minimum system requirements are met:

- Intel core (TM)2 Duo CPU or equivalent processor
- Operating system: Microsoft Windows XP with Service Pack (SP2) or Windows 7 with Service Pack 1
- Microsoft .NET 4.5 or later
- 2.0 Gigabytes (GB) RAM recommended
- 80 MB of available hard disk space

You need to install the Content Manager on your computer's hard disk. The processor speed and the available RAM impact the graphical performance in the preview mode and may limit the preview's speed. You need to have several GB of available hard disk space for storing your video clips and generated content files for luminous textile panels.

Network connection

The computer on which the Content Manager is installed has to be connected to the local network via wired or wireless connection. Follow the installation and cleaning guide on how to configure your local network and the Content Manager if this has not been done by your installer.

In the project file of your installation, these settings can be found under the Surface configurator tab in the Content Manager.

Surface configuration

The configuration settings for the network and the surface configuration are stored in the Content Manager project file belonging to your installation.

For more details on how to create or change this file, see the Content Manager manual that can be found in the help menu of the Content Manager.

3.2. Personalize your installation

In the Content Manager it is possible to change and schedule the content that is played on your luminous textile panel installation.

You can download content from our website www.largeluminoussurfaces.com/content or import your own media files.

The Content Manager 2.4.0 supports:

- Format: WMV (Windows Media Video v9)
- Codec: VC-1
- Bit rate: average 1 Mbps (for standard quality)
- Keyframe: 1s

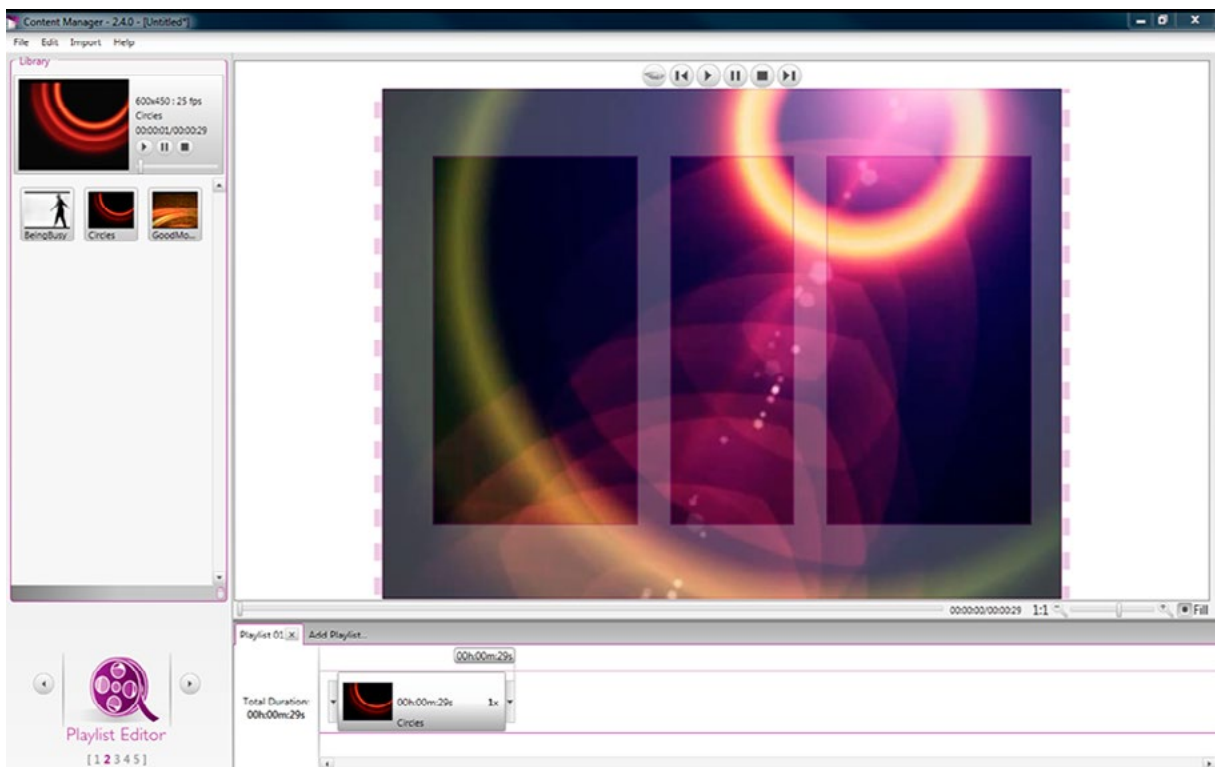


Figure 2: Content Manager - Playlist editor.

With the available content you can create your own playlists that can be controlled with your remote control or via the control page see [paragraph 4.1](#). It can also be programmed in your scheduler.

The Content Manager's scheduler enables you to have a playlist start at a specific time, on a specific day of the year. You can program recurring events, repeat a programmed sequence or program specific events, like New Year's Eve.

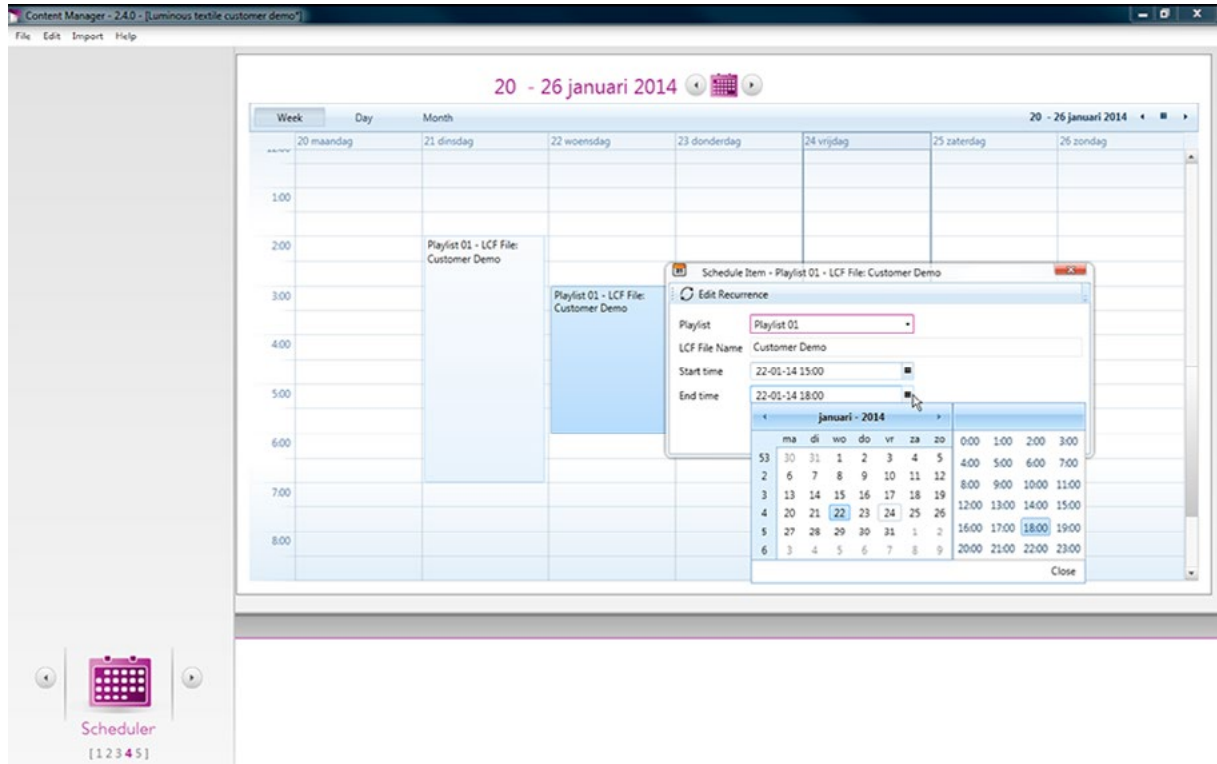


Figure 3: Content Manager - Scheduler.

For more information about how to change, program and upload everything to your installation, please read the instructions in the Content Manager manual.

4. Control your installations

Controls

4.1. Control page

The control page enables you to control the luminous textile panels from a browser on your PC, tablet or smart phone. To open the web page, open the Content Manager and click on the Display control page icon of the Master in the network settings list. Alternatively, you can enter a panel's IP address in the browser address line or use the DiscoverMe LTP app.

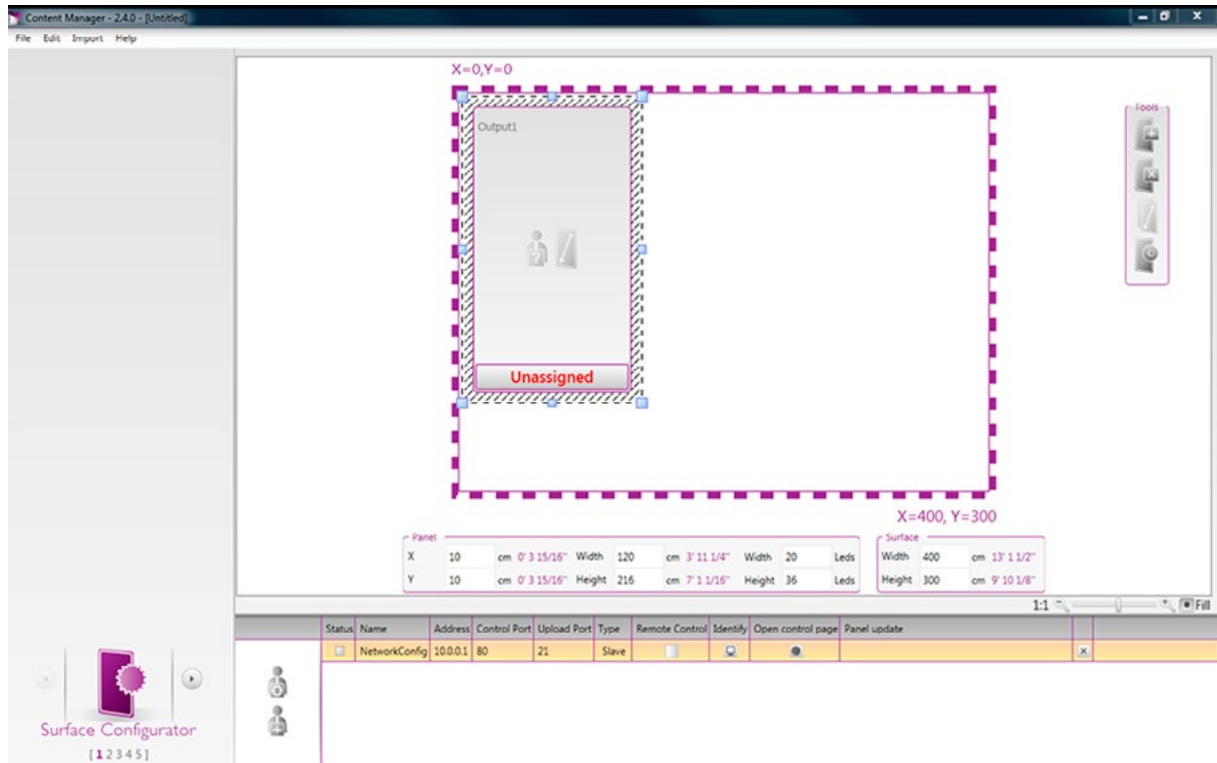


Figure 4: Content Manager - Surface configurator.

You can retrieve the IP address from your router (you have to have access to the administration page of your router) or from the Content Manager project file under the Surface configurator tab.

Status	Name	Address	Control Port	Upload Port	Type	Remote Control	Identify	Open control page	Panel update
[icon]	Luminous Textile Demo	192.168.2.39	80	21	Standalone	[checkbox]	[checkbox]	[checkbox]	[checkbox]

Figure 5: Content Manager - Network configuration list.

For more information about IP address configuration please check the installation and cleaning guide.

Below you will find a screenshot of the Master control page.

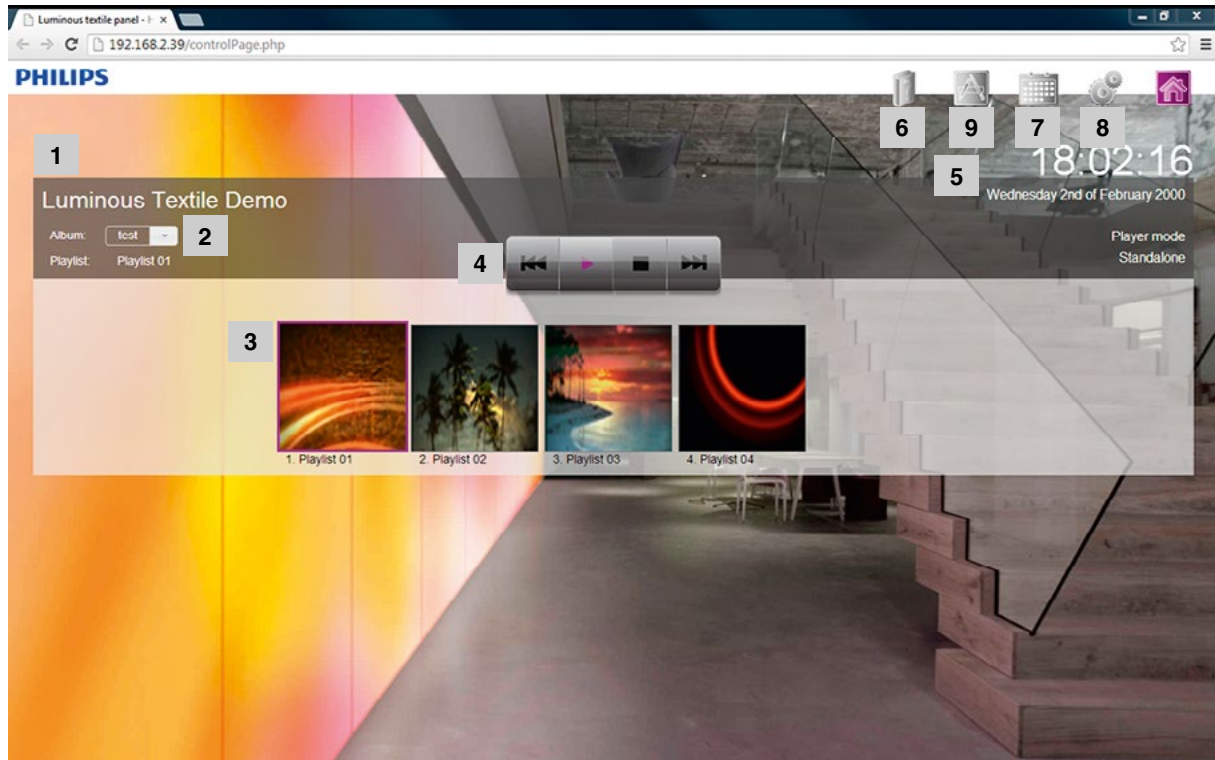


Figure 6: Master control page.

On the control page you can find:

1. Name of your installation.
2. **Album selection:** Every time a project is uploaded to the luminous textile panel an album will be generated with the different playlists inside. Different albums can be selected for playback.
3. **Playlist:** You can select a playlist in the album by clicking on the icon. The playlist will start playing immediately.
4. The control buttons:
 - Play:** ▶ Starts the current playlist.
 - Stop:** ■ Stops the current playlist.
 - Previous:** ◀◀ Jumps to the previous playlist. If you are already at the first playlist this will restart the first playlist.
 - Next:** ▶▶ Jumps to the next playlist. When you are at the last playlist this has no effect.
5. **Time and date:** Shows the time and date settings from the panel's internal clock. These settings are crucial for correct scheduled playback. The time and date can be changed in the administrator section. For more details on setting the time please see the Content Manager manual.
6. **Manual section:** In the manual section the manuals of the LTP are stored as PDF.
7. **Scheduler section:** Shows the user which playlists are programmed in the scheduler and when they start and end. The schedule can be changed in the Content Manager's scheduler.
8. **Administrator section:** This tab takes the user to the luminous textile panel's administrator page. For more details about the specific functions available in the administrator section, see the Content Manager manual.
9. **Application section:** This tab takes the user to the luminous textile panel's applications page. For more details about the specific functions available in the applications section, see the Content Manager manual.

4.2. Remote control

The remote control is delivered with each installation and can be linked to your installation by unplugging the USB receiver from the back of the remote and inserting it into the corresponding socket on the back of a luminous textile panel. For more details see the Installation and cleaning guide, Chapter 3: “Master, Slave and Standalone configuration”.

The remote control has following functions:



Figure 7: Remote control.

5. Warranty

5.1. Philips Large Luminous Surfaces January 2014

This document sets forth the warranty policy of the Philips (sales) organization (“Philips”) from which you (“Purchaser”) purchase your luminous textile panel (LTP). This policy is applicable only to Philips branded Large Luminous Surfaces (hereinafter “Products”) purchased as from 1st of October 2011 within the European Union.

This warranty policy is subject to the provisions as set forth herein and is subject to the terms and conditions as provided on the Philips website or refer to the Appendix.

This warranty policy only applies if referred to in a sales agreement between Philips and the Purchaser and it will replace the standard warranty clause provided in the Philips general terms and conditions of sale.

A. Warranty period

Subject to the provisions as set forth in the Warranty Terms and Conditions, Purchaser receives the warranty for the applicable period of 3 years.

B. Special conditions

- The warranty period starts on the date of last invoice.
- By default, the customer receives above-mentioned “standard warranty”.
- Purchaser shall not rely upon any other information or documentation.

C. Summary of the Warranty Terms and Conditions (non-exhaustive)

- This warranty is valid only for products sold in the regions mentioned. In other regions, other conditions may apply.
- The Products have been properly installed by a Philips approved installer and operated in accordance with the manufacturer’s instructions.
- Adequate records of operating history must be maintained and made available for inspection by Philips.
- A Philips representative will have access to the defective Products. If the Products or other parts become suspect, the representative shall have the right to invite other manufacturers’ representatives to evaluate the lighting systems.
- The Products have been purchased directly from a Philips (sales) organization.
- Proof of purchase for the Products is available for inspection by Philips.
- Labor costs for removal/reinstallation of the Products are not covered under this warranty.

6. Contact

Large Luminous Surfaces, Philips Lighting B.V.
High Tech Campus 27
5600 AE Eindhoven, the Netherlands

Email: info.luminous-textile@philips.com or support.luminous-textile@philips.com

Website: www.large.luminoussurfaces.com

Warranty

Terms and Conditions January 2014

Philips Policy for Large Luminous Surfaces products for Europe, Middle East, Africa, North America and China

This document sets forth the Philips Lighting warranty policy related to the sale of professional luminaires for indoor usage ("Products") from Philips to you ("Purchaser").

1. Warranty Period

The validity period of the Warranty ("Warranty Period") shall be:
3 year

2. Special conditions for luminous textile panel

- 2.1. The Warranty Period starts on the date of invoice from Philips to Purchaser.
- 2.2. The Warranty Period is based on a burning behaviour of maximum 25 khrs and maximum 2 mains switching cycles per week.
- 2.3. Purchaser shall not rely upon any other information or documentation other than this document.
3. These Warranty Terms and Conditions only apply if referred to in a Purchase Order or sales agreement for the Products between Philips and Purchaser and replaces any other warranty terms and conditions for the products concerned.
4. These Warranty Terms and Conditions only apply to Philips branded lighting products sold and delivered by Philips in the territory of Europe, Middle East, Africa, North America and China and only apply in the relationship between Philips and Purchaser and cannot be transferred by Purchaser, or otherwise be relied upon, by any third party. Purchaser acknowledges that Purchaser is not allowed, and shall not allow any agent, distributor or dealer, to change, modify or extend warranty terms on behalf of Philips.
5. Philips warrants to Purchaser that within the Warranty Period the Products shall be of satisfactory quality, be free from any defect in materials and workmanship that cause the Products to fail to operate in accordance with functional specifications, and shall comply with all statutory requirements and regulations relating to their sale.
6. If a Product fails to operate in accordance with the warranty, and subject to the exclusions and limitations set forth herein, Philips shall remedy, at its option, repair or replace the Products or the defective part thereof, or credit Purchaser for the purchase price therefore. Excluded are any removal or reinstallation costs or expenses, including without limitation labor costs or expenses.

THESE WARRANTY PROVISIONS ARE EXCLUSIVE AND ARE GIVEN AND ACCEPTED IN LIEU OF AND PHILIPS HEREBY EXPRESSLY DISCLAIMS ANY AND ALL OTHER WARRANTIES, WHETHER EXPRESS OR IMPLIED, INCLUDING WITHOUT LIMITATION ANY WARRANTY AGAINST INFRINGEMENT OR IMPLIED WARRANTIES OF MERCHANTABILITY OR FITNESS FOR A PARTICULAR PURPOSE. They state Philips' entire liability and obligation to Purchaser and Purchaser's sole and exclusive remedy in connection with defective or nonconforming Products supplied by Philips to Purchaser, whether based on any warranty not explicitly mentioned in these terms and conditions, tort, contract or any other legal theory, even if Philips has been advised or is aware of such same.

7. Without prejudice to the applicable provisions of the Philips general terms and conditions of sale, EVEN IF BASED ON WARRANTY, PHILIPS WILL NOT BE LIABILITY FOR ANY COSTS, EXPENSES OR LOSSES INCURRED BY PURCHASER, INCLUDING BUT NOT LIMITED TO LOSS OF PROFITS, LOSS OF BUSINESS, INDIRECT, INCIDENTAL, PUNITIVE, SPECIAL OR CONSEQUENTIAL DAMAGES ARISING OUT OF OR IN CONNECTION WITH THE PRODUCT. An essential purpose of the limited exclusive liabilities and remedies under the warranty is allocation of risks between Philips and Purchaser, which allocation of risks is reflected in the Product price and commercial conditions.
8. If Philips chooses to replace the Products and is not able to do so because the Products at issue have been discontinued or are not available, Philips may replace it with comparable Products. Upon request from Philips, non-conforming or defective Products shall become Philips' property upon replacement.
9. Warranty shall not apply:
 - i) to any defect or failure resulting from misapplication, improper installation, improper operation, abuse or contamination, whether internal or external, electrical supply conditions (including supply spikes, over-voltage/under-voltage and Ripple Current control systems) unless within specified limits of the products and as defined by relevant supply standards (e.g. EN 50160 norms).
 - ii) when a Product, if not installed by (or for) Philips, has not been properly wired and installed and has not been operated within the electrical values, operating ranges and environmental conditions provided in the specifications or installation instructions for such Products, including those contained in the latest safety, industry and/or electrical standards for the relevant region(s).
 - iii) to damage or failure to perform arising as a result of any force majeure event or from any abuse, misuse, stress, or abnormal strain or use, or use in violation of any applicable standard, code or instructions for use including those applicable in the relevant country;
 - iv) to any kind for failure of any equipment or other items in which the Products are incorporated;
 - v) to Products manufactured and supplied by Philips to Purchaser's designs or specifications;
 - vi) in the event of any repairs or alterations not duly authorized by Philips in writing are made to the Product by any person; and/or
 - vii) any defect or failure to perform resulting from acts by third parties.

10. Philips shall have no liability under this warranty unless Philips is notified in writing within 30 days upon Purchaser's discovery of the failure or defect specifying, where applicable, at least the following information (additional information may be required on request): details of the failed Product; date of invoice and installation; detailed problem description, number and % of failures, date-code of failure; application, hours burned and number of switching cycles; and unless, upon request, Philips' representatives is allowed access to the defective Product, system or application for assessment.
11. Where a claim under this warranty is justified Philips will pay for freight expenses. Where such a claim is not justified, Philips may charge Purchaser the freight, testing and reasonable handling costs associated therewith.
12. With respect to goods sold to Purchaser by Philips but not bearing the Philips name, brand or sub-brands (including, without limitation, lamps, control systems, ballasts, drivers and other products), Philips makes no warranty of any kind, express or implied, including any warranty of merchantability or fitness for a particular purpose. Philips agrees to make available to Purchaser upon request to the extent permitted by applicable law and relevant contracts, the warranties of the manufacturer of the relevant goods.

